

Washers & Machines

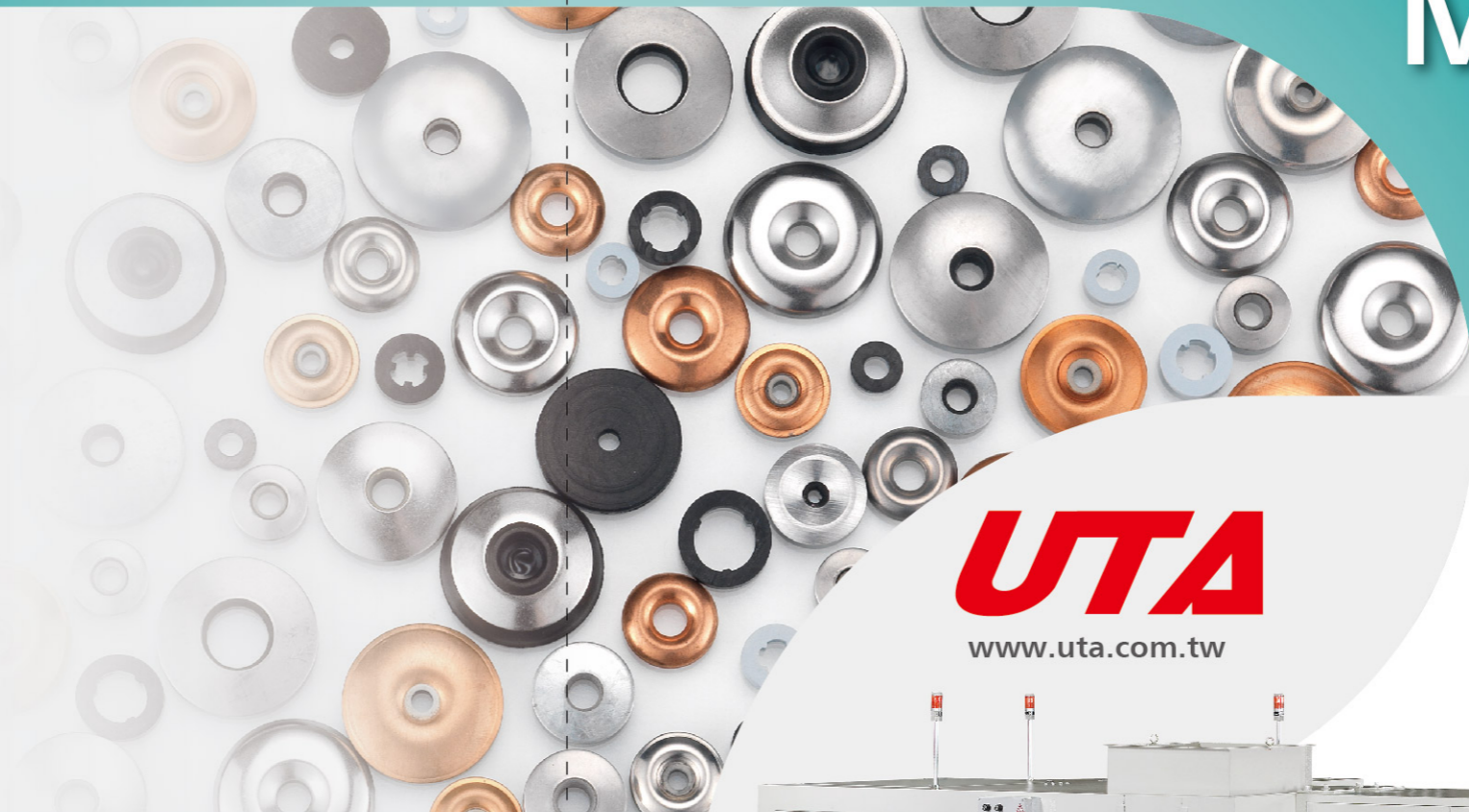
PRODUCT CATALOGUE

UTA 有達工業股份有限公司
UTA Auto Industrial Co., Ltd.

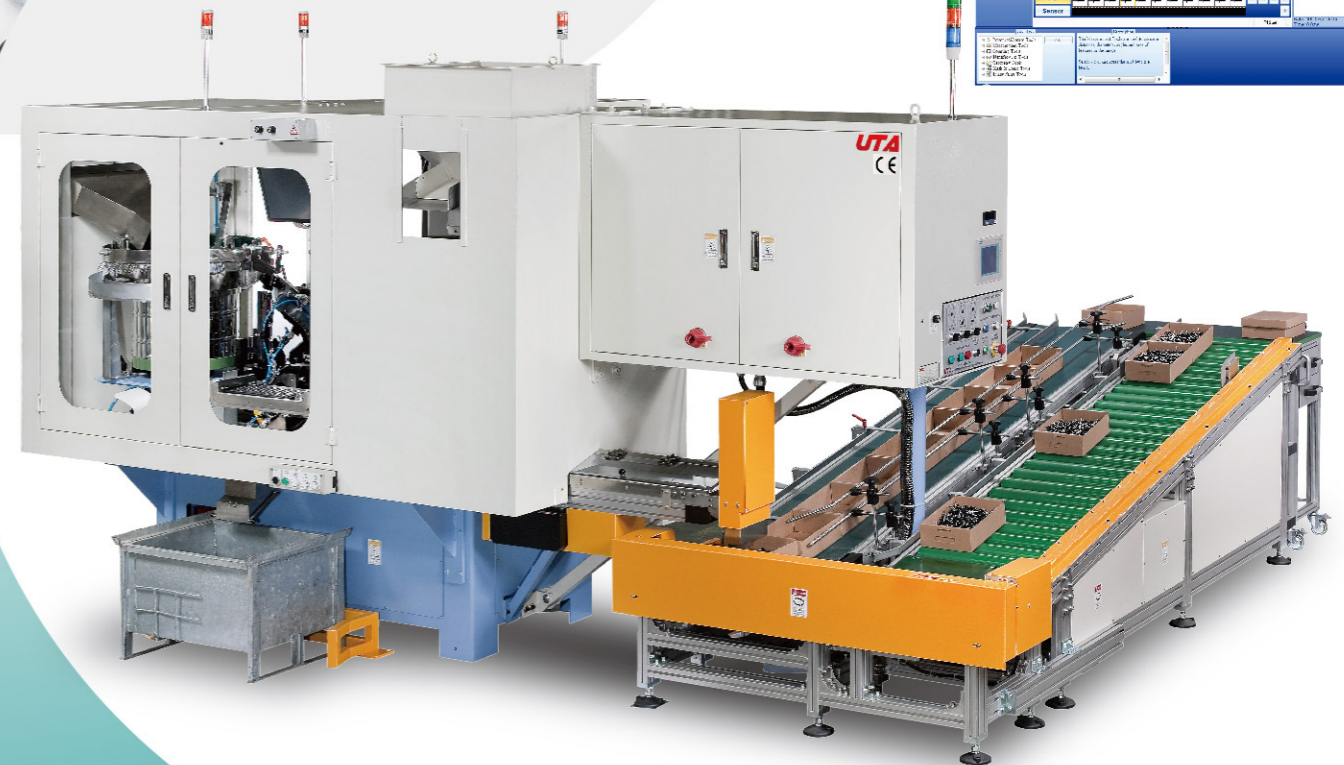
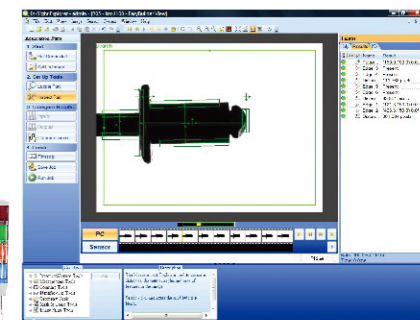
41280 台中市大里區工業十二路 1 號
No.1, Gongye 12th Rd., Dali Dist., Taichung City 41280, Taiwan
TEL: +886-4-2491 7378 FAX: +886-4-2491 7379
Email: utaauto@uta.com.tw



UTA-2013 Mar.



UTA
www.uta.com.tw



TIME LINE 企業沿革

1980 Founded
1994 UL, CSA, VDE, CB Listed
1998 ISO 9001
2001 National Innovation Research Award
2003 Golden Finger Enterprise Award

1980 公司成立
1994 通過UL、CSA及VDE安全認證
1998 ISO 9001
2001 國家創新研究獎
2003 台中市金手獎



COMPANY INTRODUCTION



企業介紹



UTA was originally founded in 1980 from the assembly machine builder. We have developed and steadily grown to encompass the fastener assembly machines, wire connectors, and sealing washers. All the crews are dedicated to bringing a cost effective and reliable solution to the wiring and the fastener industries.

Being Machine Builder

The projected team serves customers with the reliable assembly solutions, from feeder, assembly, in-line optical sorting, counting to quantity packing. Being unique globally having the ability to manufacture the multi-piece fastener assembly machines with extensive range. All machines are designed and built in-house from the quality materials, precision machining, and skilled engineers to ensure clients the quality equipment, provide the decades of repeatable service with minimal maintenance. Various different markets are covered by the different models. These being:

- Blind Rivet Assembly Machines.
- Nail and Screw Assembly Machines.
- Washer Assembly onto Fasteners Machines.
- Cable Clip Assembly Machines.
- Electrical Terminal Soldering Machines.
- Electrical Terminal Assembly Machines.
- In-line Optical Sorting, Counting and Boxing Units

Machines are designed to the CE directives and other safety requirements. As the units are all in-house designed, fabricated and assembled, inclusive of electrical and electronic functions, quality control is maintained. The modular design ensures that if subsequent similar equipment is purchased, it will be easy to maintain with the minimum spares stock. Bespoke systems can be designed to be incorporated into the production process if required.

Being Sealing Washer Manufacturer

As the source for reliable sealing and cushioning washers. The high quality washers are used widely in industrial, commercial and residential construction. UTA is committed to offerings the builders the successful sealing solution. The wide-selection for diverse screws or bolts seals.

- EPDM (conductive) rubber Bonded Washer (powder paint)
- Cut EPDM washer (Insulated)
- Umbrella washers (BAZ)
- Nylon washers
- Soft rubber lock washers

Being Wire Connector Manufacturer

The professional manufacturer of electrical terminals and wiring accessories. We are dedicated to developing the quick and easy installation for wiring job. The connectors go through the stranded wire and solid wire, start with the smallest gauge AWG 26 size (0.3 mm²). The insulators come with the vinyl, P.P., nylon and heat shrink tubing. Connectors are approved by the international certificates, UL, cUL and VDE. Various application are covered by the different connectors.

- Butt Connector (crimp type)
- Heat Shrink Connector (water proof)
- Quick Splice (no-stripping)
- Push-in Wire Connector (no-taping)
- Cable Lugs / Closed-End / Wire nut (house wiring)
- Crimping Tools

Customers from over 50 countries are using UTA machines or products. The team is very experienced in the multi-nation business, and dedicated to providing the customized service, with the bonded strategy partnership. Thanks for reading UTA, we look forward to receiving your comments soon.

有達工業創立於1980年，製造組立專用機。30多年來，穩定中求發展，建立了三個生產事業群 - 扣件二次加工專用機，接線端子，防水華司。全體員工致力於提供業界有效的解決方案。

機器設備製造

提供客戶可靠的裝配設備，整合送料，組裝，線上檢測，計數到包裝。獨特的技術，提供多件工件的組裝。所有機器，均由廠內整合研發，加工與組裝，使用高品質的物料，高精密的加工設備，與經驗豐富的工程師，確保客戶取得的機器品質，並提供最經濟的維護成本，與持續不斷的售後服務。不同的產品，選用不同的機器 -

- 拉釘自動組裝機。
- 螺絲自動組裝機。
- 華司與扣件組裝機。
- 線扣與釘組裝機。
- 端子自動焊接機。
- 端子自動裝配機。
- 線上影像檢測，計數，與包裝整合設備。

機器可符合CE與其它安規要求。零件，電控的設計與組裝，均於廠內完成，能確保功能與品質。模組化的設計，可提供客製化的服務，並結合客戶現有的生產條件。

防水華司製造

提供客戶可靠的防水與緩衝墊片製造商。高品質的華司，可廣泛應用於工業，商業與住宅上。我們有信心提供成功的防水華司。針對不同的螺絲與環境，客戶可選用多樣的防水墊片。

- EPDM (導電) 橡膠粘鐵華司 (烤漆用)。
- 切片 EPDM 華司 (絕緣)
- 碗型華司 (BAZ)
- 尼龍墊片
- 軟性橡膠齒形華司

接線端子製造

我們致力於發展快速簡單的接線成品。端子可配合絞線與單芯線，從小線徑 AWG 26 (0.3 mm²) 開始，絕緣材質有 PVC, P.P., 尼龍，與熱縮管等，也有UL, cUL, VDE 等國際認證。不同的應用，可選用不同的端子 -

- 中接管 (壓接型)
- 熱縮中接管 (防水型)
- 接線夾 (免剝線)
- 接線盒 (免膠帶)
- 銅管端子 / 閉端子 / 旋轉端子 (室內外)
- 壓接鉗

全球超過50個國家，正在使用有達工業的設備或產品。豐富的國際商務經驗，與緊密的策略夥伴關係，一定可以滿足客戶對品質與交期上的要求。謝謝您的閱讀，我們期待您進一步的訊息。





Washers
華司

FEATURE

1. High resistance to ozone, weathering, aging, heating, and abrasion.
2. Flexible service temperature from -50°C to 150°C (302°F).
3. Thermal shock durability.
4. Ultraviolet radiation resistance
5. The longest average service life to waterproof roof
6. Enhance fastener sealing, shock resistance and reliability.

特性

1. 具抗臭氧、耐候性、抗老化、抗高溫，及抗化學性。
2. 可適用環境溫度從-50°C 到 150°C (302°F)。
3. 耐熱衝擊。
4. 耐紫外線。
5. 屋頂產業平均壽命最長。
6. 增強扣件之密封性、防震性與牢固性。



APPLICATION

1. Screw gauge starts #8, and OD 11 mm. OEM is welcomed.
2. Applied for high temperature and moisture surroundings, ex, building sealing washers, door and window sealing, bathroom hardware, lighting fixing, steam tubing, heat conveyor, automotive rubber parts, appliance insulation, etc.

應用

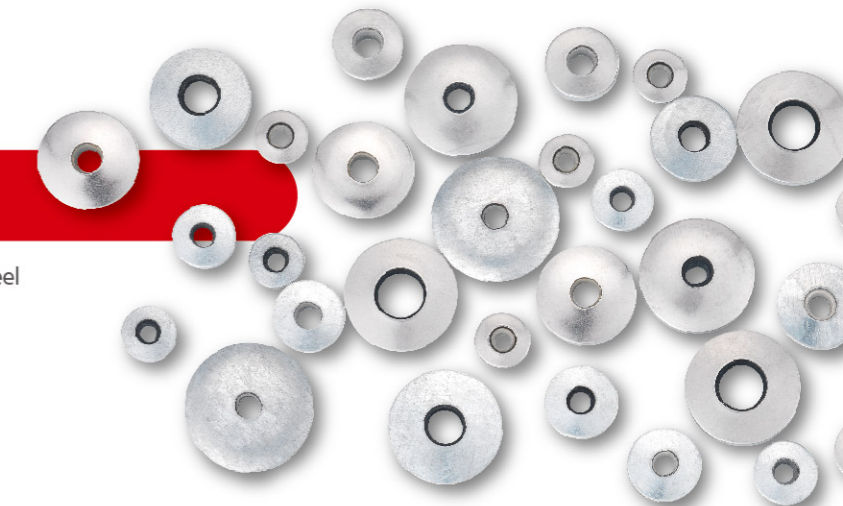
1. 可搭配最小#8螺絲開始，華司外徑從11mm開始，可與客戶一同開發新產品。
2. 可應用於高溫防水需求的環境，例如，建築防水墊片，門窗密封條，衛浴五金，戶外燈具固定，蒸汽膠管、耐熱運輸帶、汽車用橡膠製品，與電器絕緣等。



BONDED 黏鐵華司

Face material: Stainless Steel / Aluminum / Galvanized Steel
 Bottom material: EPDM (Black / Gray)
 Hardness (Shore A):
 Non-Conductive EPDM: 75±7 degrees (Black / Gray)
 Conductive EPDM: 70±5 degrees (Black)
 Temperature resistance (20 minutes):
 Non-conductive EPDM: 170 °C(338 °F) (Black)
 150 °C(302 °F) (Gray)
 Conductive EPDM: 220 °C(428 °F) (Black)

面材：不鏽鋼板 / 鋁板 / 鍍鋅板
 底材：EPDM (黑/灰)
 硬度(Shore A)：
 非導電EPDM：75±7 度(黑/灰)
 導電 EPDM：70±5 度(黑)
 耐溫(20分鐘)：
 非導電EPDM：170°C(338°F) (黑)
 150°C(302°F) (灰)
 導電EPDM：220°C(428°F) (黑)



Specification 規格表 OEM / ODM available

Part No.	Screw Size (Gauge)	Metal OD mm (inch)	EPDM T mm (inch)
SEB / SEG AEB / AEG GEB / GEG	4.2 (#8)	12.0 (0.472)	1.7 (0.067)
	4.8 (#10)	14.0 (0.551)	
	5.5 (#12)	11.0 (0.433)	
SEB-C AEB-C GEB-C	5.5 (#12)	16.0 (0.630)	2.0 (0.079)
	6.3 / 6.5 (#14)	19.0 (0.748)	2.5 (0.098)
	M8 (5/16")	22.0 (0.866)	3.0 (0.118)
	M10 (3/8")	25.0 (0.984)	
	M12 (1/2")	28.0 (1.102)	

UTA reserves the right to discontinue or modify the above information without notice. 有違保留未經通知變更上述資料的權利。

M-TYPE 黏鐵華司

Face material: Stainless Steel / Copper / Aluminum
 Bottom material: EPDM (Gray / Black)
 Hardness (Shore A):
 Gray EPDM: 70±5 degrees
 Conductive Black EPDM: 70±5 degrees
 Temperature resistance (20 minutes):
 Gray EPDM: 150 °C(302 °F)
 Conductive Black EPDM: 200°C(392 °F)

面材：不鏽鋼板 / 銅板 / 鋁板
 底材：EPDM (灰/黑)
 硬度(Shore A)：
 灰色EPDM：70±5 度
 導電黑色 EPDM：70±5 度
 耐溫(20分鐘)：
 灰色EPDM：150 °C(302 °F)
 導電黑色EPDM：200 °C(392 °F)



Specification 規格表 OEM / ODM available

Part No.	Screw Size (Gauge)	Metal OD mm (inch)	EPDM T mm (inch)
M-A2	M4.5 (#9)	15.0 (0.591)	1.8 (0.071)
M-CO		20.0 (0.787)	
		25.0 (0.984)	
M-AL-C	4.8 (#10)	14.0 (0.551)	2.0 (0.079)
	M4 (#8)	16.0 (0.630)	1.4 (0.055)

UTA reserves the right to discontinue or modify the above information without notice. 有違保留未經通知變更上述資料的權利。

CUT 切片

Material: EPDM (Black / Gray)
 Hardness (Shore A): 80±5 degrees
 Temperature resistance (20 minutes):
 Black: 170°C (338°F) / 200°C (392°F)
 Gray: 170°C (338°F)
 Insulated Black: 170°C (338°F)

材質：EPDM (黑/灰)
 硬度(Shore A): 80±5 度
 耐溫(20分鐘)：
 黑色：170°C (338°F) / 200°C (392°F)
 灰色：170°C (338°F)
 絕緣黑色：170°C (338°F)

Specification 規格表 OEM / ODM available

Part No.	Screw Size (Gauge)	OD mm (inch)	EPDM T mm (inch)	Flute	
OEB OEG OEB-I	4.2 (#8)	8.5(0.335)	1.5(0.059) 2.2(0.086) 2.6(0.102) 2.8(0.110) 3.2(0.126) 4.0(0.157)	SM F4 F6	
	4.8 (#10)	8.5(0.335)			
	4.8 (#10)	8.8(0.345)			
	5.5 (#12)	10.5(0.413)			
	5.5 (#12)	10.7(0.421)			
	6.3 (#14)	11.2(0.441)			
	6.3 (#14)	11.4(0.449)			
	M4.5	13.0(0.512)			2.2(0.866)
		18.0(0.709)			
		23.0(0.906)			
M8 (5/16")	13.4(0.528)	2.5(0.098)	F4		
M10 (3/8")	15.0(0.591)	2.8(0.110)	F4		

UTA reserves the right to discontinue or modify the above information without notice.
 有違保留未經通知變更上述資料的權利。

CUP M型華司

Material: Stainless Steel / Copper
 面材：不銹鋼板 / 銅板

Specification 規格表 OEM / ODM available

Part No.	Screw Size (Gauge)	OD mm (inch)	ID mm (inch)	T mm (inch)
Cup M-A2	M4.5	15.0 (0.591)	5.4 (0.213)	0.4 (0.016)
	M4.5	20.0 (0.787)	5.4 (0.213)	0.4 (0.016)
Cup M-CO	M4.5	25.0 (0.984)	5.4 (0.213)	0.4 (0.016)

UTA reserves the right to discontinue or modify the above information without notice.
 有違保留未經通知變更上述資料的權利。

BAZ 碗型華司

Face material: Stainless Steel / Galvanized Steel / Aluminum
 Bottom material: EPDM (Black)
 Hardness (Shore A): 75±7 degrees
 Temperature resistance (20 minutes): 170°C (338°F)

面材：不銹鋼板 / 鍍鋅板 / 鋁板
 底材：EPDM (黑)
 硬度(Shore A): 75±7 度
 耐溫(20分鐘)：170°C (338°F)

Specification 規格表 OEM / ODM available

Part No.	Screw Size (Gauge)	Metal OD mm (inch)	Metal ID mm (inch)	EPDM OD mm (inch)	EPDM ID mm (inch)
BAZ+A2 BAZ+GEL	6.3(#14)	22.0(0.866)	10.2(0.402)	25.0(0.984)	6.5(0.256)

UTA reserves the right to discontinue or modify the above information without notice.
 有違保留未經通知變更上述資料的權利。

OIL SEALS 油封

Material: Black NBR + Carbon Steel
 材質：黑色 NBR + 碳鋼

Specification 規格表 OEM / ODM available

Part No.	Bolt Size (Gauge)	OD mm (inch)	ID mm (inch)	T mm (inch)
OR-N	M4(5/32")	7.9 / 10.0 (0.311) / (0.394)	4.0 / 5.7 (0.158) / (0.224)	1.0(0.039)
	M5(3/16")	8.9(0.350)	5.0(0.197)	1.0(0.039)
	M6(1/4")	9.9 / 11.0 (0.390) / (0.433)	6.0 / 6.7 (0.236) / (0.264)	1.0(0.039)
	M7	13.40(0.528)	8.5(0.335)	1.0(0.039)
	M8(5/16")	13.0 / 13.9 (0.512) / (0.547)	8.7 / 8.0 (0.343) / (0.315)	1.0(0.039)
	M10(3/8")	16.9 / 19.1 (0.665) / (0.752)	10.0 / 11.8 (0.394) / (0.465)	1.5(0.059)
	M12(1/2")	18.9 / 22.0 (0.744) / (0.866)	12.0 / 13.7 (0.472) / (0.539)	1.5(0.059)
	M14	21.9 / 22.2 (0.862) / (0.874)	14.0 / 15.8 (0.551) / (0.622)	1.5 / 2.0 (0.059) / (0.079)
	M16(5/8")	23.9 / 28.0 (0.941) / (1.102)	16.0 / 20.7 (0.630) / (0.815)	1.5(0.059)
	M18	26.9 / 28.7 (1.059) / (1.130)	18.0 / 21.5 (0.709) / (0.847)	2.0 / 2.5 (0.079) / (0.098)
	M20(3/4")	29.9 / 32.0 (1.177) / (1.260)	20.0 / 24.7 (0.787) / (0.972)	2.0(0.079)
	M22	31.9 / 35.0 (1.256) / (1.378)	22.0 / 26.7 (0.866) / (1.051)	2.0(0.079)
	M24(1")	35.9 / 37.0 (1.413) / (1.457)	24.0 / 28.7 (0.945) / (1.130)	2.0(0.079)

UTA reserves the right to discontinue or modify the above information without notice.
 有違保留未經通知變更上述資料的權利。

TOOTH LOCK WASHER 齒型防鬆華司

Material: Gray TPE + Lock Washer
 材質：灰色TPE + 齒形華司

Specification 規格表 OEM / ODM available

Part No.	Bolt Size (Gauge)	OD mm (inch)	Steel ID mm (inch)	Rubber id mm (inch)	T mm (inch)
TL	M12(1/2")	24.0(0.945)	12.5(0.492)	9.5(0.374)	3.1(0.122)

UTA reserves the right to discontinue or modify the above information without notice.
 有違保留未經通知變更上述資料的權利。

尼龍

Material: Nylon 6, 6/6
 Color: Nature, Black
 材質：尼龍 6, 6/6
 顏色：本色，黑色

Specification 規格表 OEM / ODM available

Part No.	Screw Size (Gauge)	Metal OD mm (inch)	Metal ID mm (inch)	EPDM T mm (inch)
Nylon	M3(1/8")	7.0 (0.276)	3.2(0.126)	0.5 (0.020)
	M4(5/32")	9.0 (0.354)	4.5 (0.177)	0.8 (0.031)
	M5(3/16")	8.0 (0.315)	4.8 (0.189)	1.0 (0.039)
	M6(1/4")	12.0 (0.472)	6.2 (0.244)	0.5 (0.020)
	M8(5/16")	12.7 (0.500)	8.0 (0.315)	1.0 (0.039)
	M10(3/8")	24.0 (0.945)	10.5 (0.413)	2.0 (0.079)
	M12(1/2")	24.0 (0.945)	13.0 (0.512)	2.5 (0.098)
	M16(5/8")	30.0 (1.181)	17.0 (0.669)	3.0 (0.118)
	M20(3/4")	37.0 (1.457)	21.0(0.827)	3.0 (0.118)
	M24(1")	50.0 (1.969)	25.0 (0.984)	4.0 (0.157)
	M30(1-1/4")	60.0 (2.362)	31.0(1.220)	4.0 (0.157)

UTA reserves the right to discontinue or modify the above information without notice.
 有違保留未經通知變更上述資料的權利。

Assembly 組立專用機

Integrated Solution for Fastener Assembly

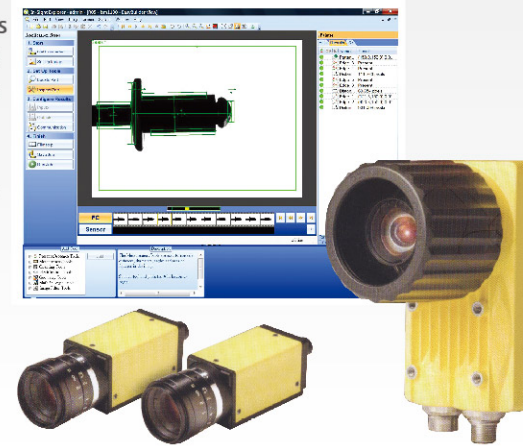
Feature & Benefit

- 1.Assembly with Inline optical sorting, counting and packing.
- 2.Automatic sorting missed assembly parts.
- 3.Sensors programmed from feeding to assembly, stop and start the motions automatically.
- 4.Durable life with torque limit.
- 5.Adjust speed quickly by inverter.
- 6.Visible stoppage and production volume from alarm table.
- 7.Minimize labor and space from integrating assembly and packing system.
- 8.Real time quality & production information from digital units.
- 9.ODM machine by the experienced developing team.

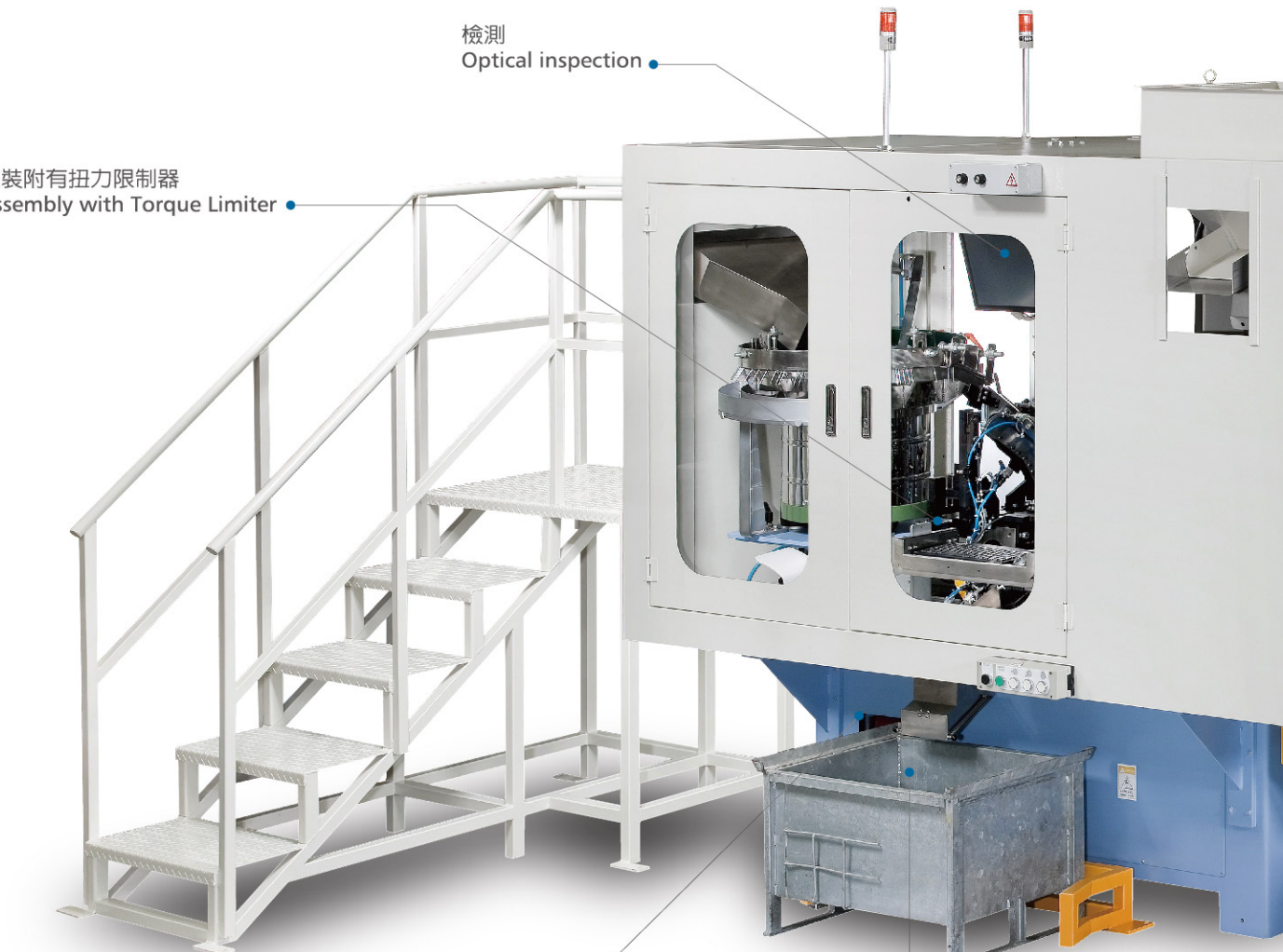
Application

Applied for assembling multiple parts as

- blind rivets
- Threading nails
- Drilling screws
- Timber screws
- Anchors
- drive pins
- cable clips etc.



組裝附有扭力限制器
 Assembly with Torque Limiter



組裝不良出口
 Missed Assembly Exit

• 散貨包裝
 Bulk Package

Multi-Grip Blind Rivet Automatic Assembly & Crimping Machine

拉釘自動組合及夾頭專用機



Specification 規格表 OEM / ODM available

Model	Body (OD) mm / inch	Body (L) mm / inch	Stem (OD) mm / inch	Stem (L) mm / inch	Speed (PPM)	Remark
LB04-32	3.2 - 4.0 4.8 - 6.4	6 - 10, 8 - 19, 19 - 25, 25 - 32	1.8 - 2.2 2.7 - 3.9	40 - 60, 48 - 60, 50 - 70	250 100	multi-grip
	1/8" - 5/32" 3/16" - 1/4"	0.236" - 0.394", 0.315" - 0.748", 0.748" - 0.984", 0.984" - 1.260"	0.071" - 0.087", 0.106" - 0.154"	1.575" - 2.362", 1.890" - 2.362", 1.969" - 2.756"		
	4.8 3/16"	8 - 19 0.315" - 0.748"	2.9 0.114"	38 - 48 1.496" - 1.890"		
LB13-25	3.2 - 4.0 4.8 - 6.4	6 - 10, 8 - 19, 19 - 25, 25 - 32	1.8 - 2.2 2.7 - 3.9	40 - 60, 48 - 60, 50 - 70	250	long stem
	1/8" - 5/32" 3/16" - 1/4"	0.236" - 0.394", 0.315" - 0.748", 0.748" - 0.984", 0.984" - 1.260"	0.071" - 0.087", 0.106" - 0.154"	1.575" - 2.362", 1.890" - 2.362", 1.969" - 2.756"		
	4.8 3/16"	8 - 19 0.315" - 0.748"	2.9 0.114"	38 - 48 1.496" - 1.890"		

Machine size (L x W x H): 1,370 x 1,650 x 2,280 mm, N.W.: 1,670 KG, with safety cover
 UTA reserves the right to discontinue or modify the above information without notice.
 有違保留未經通知變更上述資料的權利。

Blind Rivet Assembly Machine (plus Inline Counting & Packing Unit)

拉釘自動組合專用機 (加線上計數自動包裝系統)



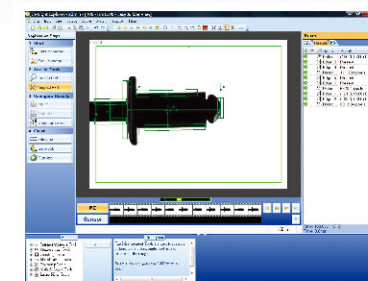
Specification 規格表 OEM / ODM available

Model	Body (OD) mm / inch	Body (L) mm / inch	Stem (OD) mm / inch	Stem (L) mm / inch	Speed (PPM)	Remark
LD04-32	3.2 - 4.0 4.8 - 6.4	6 - 10, 8 - 19, 19 - 25, 25 - 32	1.8 - 2.2 2.7 - 3.9	40 - 60, 48 - 60, 50 - 70	450 250	
	1/8" - 5/32" 3/16" - 1/4"	0.236" - 0.394", 0.315" - 0.748", 0.748" - 0.984", 0.984" - 1.260"	0.071" - 0.087", 0.106" - 0.154"	1.575" - 2.362", 1.890" - 2.362", 1.969" - 2.756"		
	4.8 3/16"	8 - 19 0.315" - 0.748"	2.9 0.114"	38 - 48 1.496" - 1.890"		
LD05-32	3.2 - 4.0 4.8 - 6.4	6 - 10, 8 - 19, 19 - 25, 25 - 32	1.8 - 2.2 2.7 - 3.9	40 - 60, 48 - 60, 50 - 70	450	for boxing unit model
	1/8" - 5/32" 3/16" - 1/4"	0.236" - 0.394", 0.315" - 0.748", 0.748" - 0.984", 0.984" - 1.260"	0.071" - 0.087", 0.106" - 0.154"	1.575" - 2.362", 1.890" - 2.362", 1.969" - 2.756"		
	4.8 3/16"	8 - 19 0.315" - 0.748"	2.9 0.114"	38 - 48 1.496" - 1.890"		

CF02-1000 Minimum package: 50 pcs per box, box size (L x W x H): 184 x 110 x 207 mm (bespoken)
 Assembly machine size (L x W x H): 1,950 x 1,380 x 2,350 mm, N.W.: 1,072 KG, with safety cover
 UTA reserves the right to discontinue or modify the above information without notice.
 有違保留未經通知變更上述資料的權利。

Blind Rivet & Washer Automatic Assembly Machine (3 pc) - plus Inline Optical Sorting, Counting & Packing

拉釘與墊片自動組合專用機 (3pc) 結合線上影像檢測，計數與包裝設備



Specification 規格表 OEM / ODM available

Model	Body OD mm	Body L mm	Stem OD mm	Stem L mm	Gasket OD mm	Speed (PPM)	Remark
LE	6.4-7.5	12.4	3.65	47	11 20 ~ 24	210	3 pc assembly

Machine size (L x W x H): 3,700 x 1,800 x 2,300 mm, N.W.: 2,500 KG
 Conveyor size (L x W x H): 3,600x1,350x90, N.W.: 250 KG

UTA reserves the right to discontinue or modify the above information without notice.
 有違保留未經通知變更上述資料的權利。

Blind Rivet Automatic Assembly Machine

拉釘自動組合專用機

Specification 規格表 OEM / ODM available

Model	Body (OD) mm / inch	Body (L) mm / inch	Stem (OD) mm / inch	Stem (L) mm / inch	Speed (PPM)	Remark
LA01-12	2.4 (3/32")	6 - 12 (0.236 - 0.472)	1.3 (0.051)	36 - 50 (1.417 - 1.969)	250 - 450	short rivet
	3.2 (1/8")	6 - 12 (0.236 - 0.472)	1.8 (0.071)	36 - 50, 40 - 55 (1.417 - 1.969), (1.575 - 2.165)	300 - 450	short rivet
LA01-30	4.0 (5/32")	8 - 30 (0.315 - 1.181)	2.2 (0.087)	45 - 60, 50 - 65 (1.772 - 2.362), (1.969 - 2.559)	300 - 450	
	4.8 (3/16")	8 - 30 (0.315 - 1.181)	2.7 (0.106)	45 - 60, 50 - 65 (1.772 - 2.362), (1.969 - 2.559)	300 - 450	
LA07-38	4.0 (5/32")	16 - 38 (0.630 - 1.496)	2.2 (0.087)	55 - 70 (2.165 - 2.756)	250 - 300	long rivet
	4.8 (3/16")	16 - 38 (0.630 - 1.496)	2.7 (0.106)	55 - 70 (2.165 - 2.756)	250 - 300	long rivet
LA09-30	6.4 (1/4")	16 - 38 (0.630 - 1.496)	3.9 (0.154)	55 - 70 (2.165 - 2.756)	150 - 250	long rivet
	4.0 (5/32")	8 - 30 (0.315 - 1.181)	2.0 (0.079)	45 - 60, 50 - 65 (1.772 - 2.362), (1.969 - 2.559)	250 - 450	quick adjustment cross length
	5.0 (0.197)	8 - 30 (0.315 - 1.181)	2.7 (0.106)	45 - 60, 50 - 65 (1.772 - 2.362), (1.969 - 2.559)	250 - 450	

Machine size (L x W x H): 2,820 x 1,390 x 2,420 mm, N.W.: 1,080 KG, with safety cover
 UTA reserves the right to discontinue or modify the above information without notice.
 有違保留未經通知變更上述資料的權利。

Washer Automatic Assembly Machine (plus Inline Counting & Packing Unit)

華司自動組合專用機 (加線上計數自動包裝系統)

Specification 規格表 OEM / ODM available

Model	Screw (OD) mm / gauge	Screw (L) mm (inch)	Washer (OD) mm (inch)	Speed (PPM)	Remark
SD01-75	4.2 - 6.5 #8 - #14	19 - 75 (0.748 - 2.953)	12 - 25 (0.472 - 0.984)	250 - 600	2 pcs screw assembly
SD03-50	M6 - M12 (1/4" - 1/2")	19 - 50 (0.748 - 1.969)	8 - 19 (0.315 - 0.148)	100 - 250	2 pcs bolt assembly
SD05-75	3.5 (1/8")	19 - 75 (0.748 - 2.953)	8 - 19 & 16 - 25 (0.748 - 2.953) & (0.630 - 0.984)	100 - 250	3 pcs nail assembly
SD09-90	4.2 - 6.5 #8 - #14	19 - 75 (0.748 - 2.953)	12 - 25 (0.472 - 0.984)	200 - 500	2 pcs assembly
SD14-75	4.2 - 6.5 #8 - #14	19 - 75 (0.748 - 2.953)	12 - 16 (0.472 - 0.630)	250 - 1,000	2 pc assembly
SD16-150	4.2 - 6.5 #8 - #14	25 - 150 (0.984 - 5.906)	12 - 19 (0.472 - 0.148)	100 - 250	2 pcs non-s/s long screw assembly
SD20-75	4.2 - 6.5 #8 - #14	19 - 75 (0.748 - 2.953)	12 - 25 (0.472 - 0.984)	250 - 600	2 pcs assembly for CF boxing unit
CF01-1000	Minimum package: 50 pcs per box, box size (L x W x H): 120 x 120 x 110 mm (bespoken)				for SD20-75
SD23-50	M6 - M12 (1/4" - 1/2")	19 - 50 (0.748 - 1.969)	8 - 19 (0.315 - 0.148)	100 - 250	2 pc bolt assembly, for CF boxing unit
CF04-1000	Minimum package: 50 pcs per box, box size (L x W x H): 120 x 120 x 110 mm (bespoken)				for SD23-50

Assembly machine size (L x W x H): 1,800 x 1,500 x 1,500 mm, N.W.: 1,160 KG, with safety cover (SD01 / SD05 / SD09 / SD20 / SD23)
 Assembly machine size (L x W x H): 2,300 x 2,650 x 2,100 mm, N.W.: 1,500 KG, with safety cover (SD14)
 Assembly machine size (L x W x H): 1,900 x 1,500 x 1,780 mm, N.W.: 2,150 KG, with safety cover (SD16)
 Boxing unit (L x W x H): 1,130 x 600 x 670 mm, N.W.: 130 KG (CF01 / CF04)

UTA reserves the right to discontinue or modify the above information without notice.
 有違保留未經通知變更上述資料的權利。

BAZ Washer Automatic Assembly Machine

碗型華司自動組合專用機

Specification 規格表 OEM / ODM available

Model	Screw (OD) mm / gauge	Screw (L) mm (inch)	Bowl Washer (OD) mm (inch)	Metal Washer (OD) mm (inch)	Speed (PPM)	Remark
SM01-150	6.3 (1/4") #14	40 - 150 (1.57" - 5.91")	25(0.984)	24(0.945)	130 - 150	2 pc BAZ washer assembly, 3 pc screw assembly

Assembly machine size (L x W x H): 2,760 x 1,930 x 2,161 mm, N.W.: 2,745 KG, with safety cover.
 Vertical conveyor size (L x W x H): 2,965 x 538 x 2,830 mm, N.W.: 650 KG. (optional)
 Hopper size (L x W x H): 970 x 1,040 x 860 mm, N.W.: 200KG. (optional)

UTA reserves the right to discontinue or modify the above information without notice.
 有違保留未經通知變更上述資料的權利。

M-Type Washer Automatic Assembly Machine

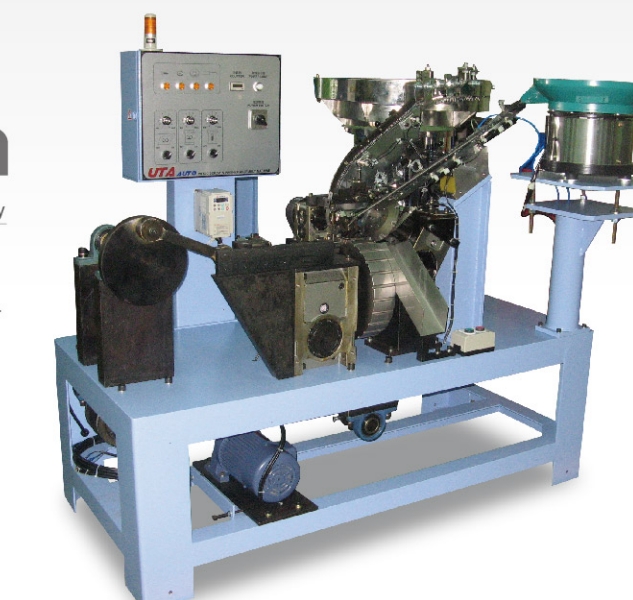
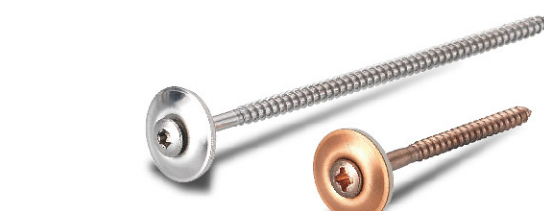
M-type 華司自動組合專用機

Specification 規格表 OEM / ODM available

Model	Screw (OD) mm / gauge	Screw (L) mm (inch)	Washer (OD) mm (inch)	Speed (PPM)	Remark
SA02-120	4.5#9	20 - 120 (0.787 - 4.724)	15 - 20 (0.591 - 0.787)	100 - 200	2 pc assembly

Assembly machine size (L x W x H): 1,890 x 1,450 x 1,620 mm, N.W.: 1,500 KG, without safety cover.

UTA reserves the right to discontinue or modify the above information without notice.
 有違保留未經通知變更上述資料的權利。



M-Type Washer Automatic Assembly Machine

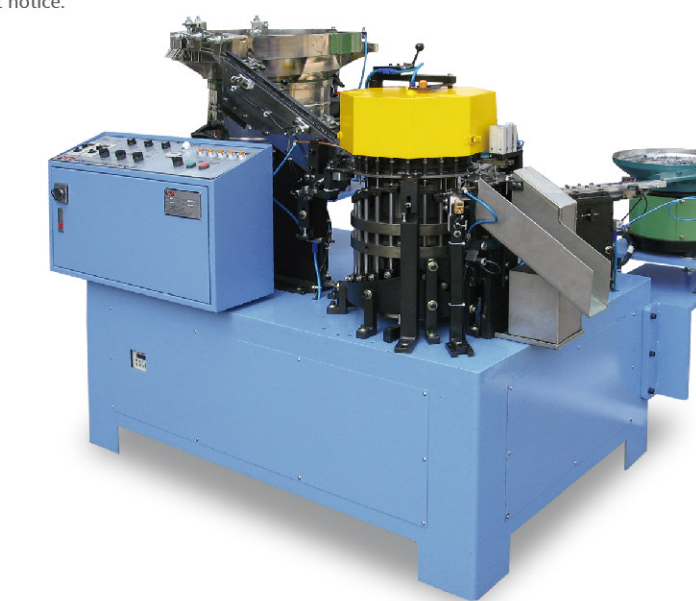
M-type 華司自動組合專用機

Specification 規格表 OEM / ODM available

Model	Screw (OD) mm / gauge	Screw (L) mm (inch)	Washer (OD) mm (inch)	Washer (OD) mm (inch)	Speed (PPM)	Remark
SJ01-75	4.5#9	25 - 75 (0.984 - 2.953)	15 - 20 - 25 (0.591 - 0.787 - 0.984)	13 - 18 - 23 (0.512 - 0.709 - 0.906)	150 - 200	2 or 3 pc assembly

Assembly machine size (L x W x H): 1,800 x 1,550 x 1,620 mm, N.W.: 1,225 KG, without safety cover.

UTA reserves the right to discontinue or modify the above information without notice.
 有違保留未經通知變更上述資料的權利。



自動化裝配專用機 整合方案

特色與好處

1. 結合檢測，計數與包裝於裝配專用機內。
2. 自動篩選組裝不良的工件。
3. 送料與組裝過程均有感應器與程式控制，可自動停機或啓動。
4. 附有扭力限制器，可延長機器壽命。
5. 變頻驅動，可快速調整組裝速度。
6. 操作面板可顯示停機原因與生產數量，有利控管產能。
7. 結合自動組裝與包裝系統，可有效節省人力與空間。
8. 整合數位化設備，可即時提供品質與產量訊息。
9. 專業的研發團隊，可依據客戶需求客製機器。

應用

多件式緊固件裝配，

- 拉釘
- 螺紋釘
- 鑽尾螺絲
- 鏈帶螺絲
- 木螺絲
- 壁虎釘
- 水泥擊釘
- 鋼釘線扣等。



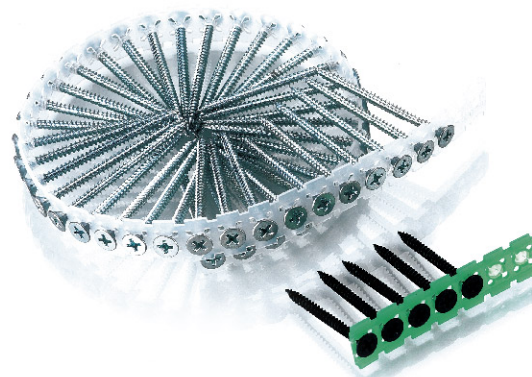
• 計數下料
Quantity Counting Exit

Roof Nail Automatic Assembly Machine 屋頂釘帽蓋自動組合專用機

Specification 規格表 OEM / ODM available **CE**

Model	Nail (OD) mm (inch)	Nail (L) mm (inch)	Housing (OD x H) mm (inch)	Lid (OD x H) mm (inch)	Speed (PPM)	Remark
SK01-70	3.45(1/8)	70(2.756)	18 x 9.15 (0.709 x 0.360)	11 x 6 (0.433 x 0.236)	100	3 pc assembly

Assembly machine size (L x W x H): 1,700 x 2,100 x 1,900 mm, N.W.: 2,100 KG, with safety cover
UTA reserves the right to discontinue or modify the above information without notice.
有違保留未經通知變更上述資料的權利。



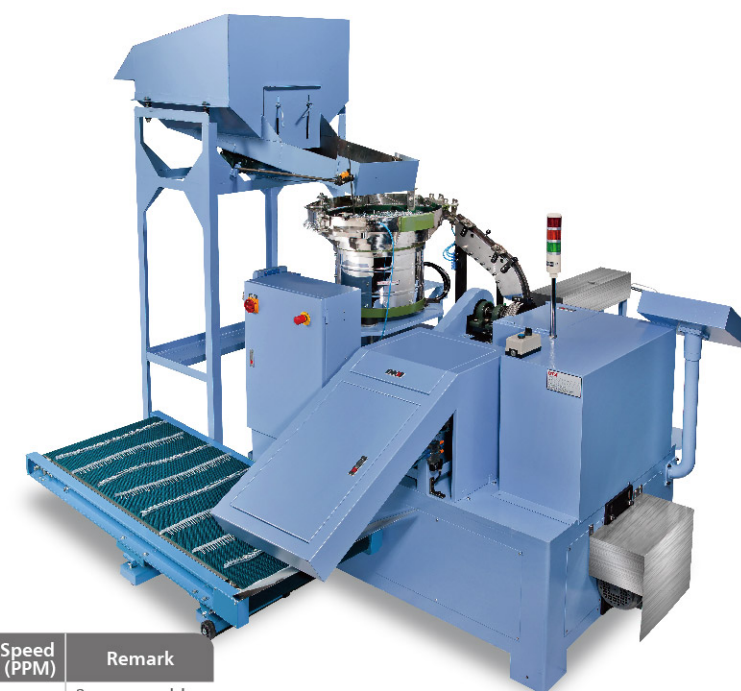
Collated Screw Automatic Assembly Machine 鏈帶螺絲自動組合專用機

Specification 規格表 OEM / ODM available **CE**

Model	Screw (OD) mm / gauge	Screw (L) mm (inch)	Strip Pitch	Strip T	Speed (PPM)	Remark
ST02-70	3.4 ~ 4.0 (1/8 ~ 5/32)	20 ~ 70 (0.787 ~ 2.756)	10 (0.394)	1.3 ~ 2.0 (0.051 ~ 0.079)	300 ~ 600	2 pc assembly, with oven conveyor

Assembly machine size (L x W x H): 2,100 x 1,800 x 1,700 mm, N.W.: 1,690 KG, with safety cover.
Conveyor size (L x W x H): 2,100 x 650 x 600, N.W.: 87 KG
Oven size (L x W x H): 700 x 200 x 1,100, N.W.: 55 KG

UTA reserves the right to discontinue or modify the above information without notice.
有違保留未經通知變更上述資料的權利。



Plastic Anchor Automatic Assembly Machine 塑膠壁虎釘自動組合專用機

Specification 規格表 OEM / ODM available **CE**

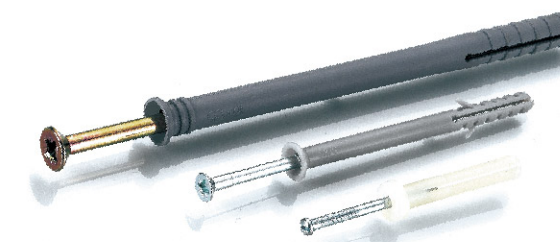
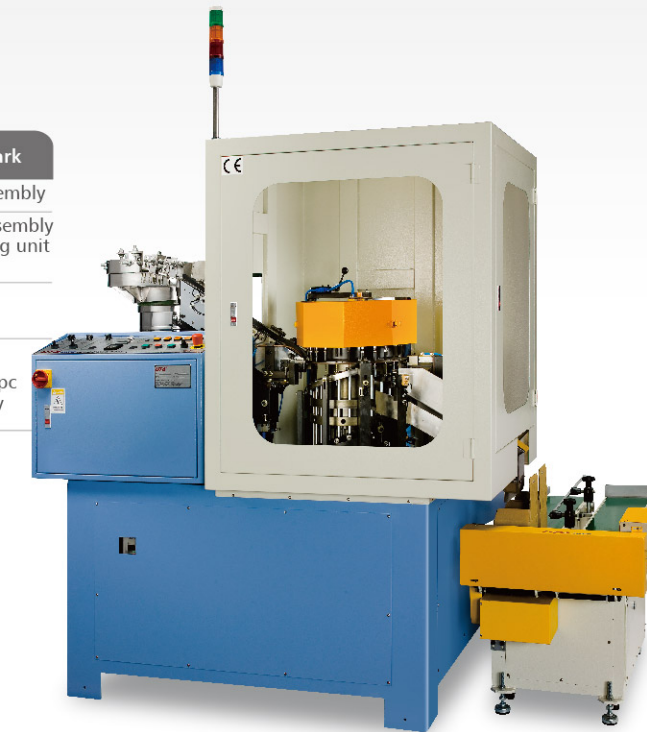
Model	Anchor (OD) mm (gauge)	Anchor (L) mm (inch)	Screw (OD) mm (inch)	Screw (L) mm (inch)	Speed (PPM)	Remark
LZ05-80	5 ~ 6 ~ 8 ~ 10 (3/16 ~ 1/4 ~ 5/16 ~ 3/8)	35 ~ 80 (1.378 ~ 3.150)	3.5 - 3.9 - 4.9 - 6.9 (0.138 ~ 0.154 ~ 0.193 ~ 0.272)	40 ~ 85 (1.575 ~ 3.346)	250 ~ 600	2 pc assembly
LZ08-80						2 pcs assembly CF boxing unit model
CF01-1000	Minimum package: 50 pcs per box, box size (L x W x H): 120 x 120 x 110 mm (bespoke)					
LZ06-150	5 ~ 6 ~ 8 ~ 10 (3/16 ~ 1/4 ~ 5/16 ~ 3/8)	35 ~ 150 (1.378 ~ 5.906)	3.5 - 3.9 - 4.9 - 6.9 (0.138 ~ 0.154 ~ 0.193 ~ 0.272)	40 ~ 155 (1.575 ~ 6.102)	150 ~ 250	Long screw 2 pc assembly

Assembly machine size (L x W x H): 1,940 x 1,680 x 2,100 mm, N.W.: 1,440 KG, with safety cover (LZ05 / LZ08)

Assembly machine size (L x W x H): 1,960 x 1,780 x 1,800 mm, N.W.: 2,100 KG, with safety cover (LZ06)

Boxing unit (L x W x H): 1,150 x 600 x 670 mm, N.W.: 150 KG

UTA reserves the right to discontinue or modify the above information without notice.
有違保留未經通知變更上述資料的權利。



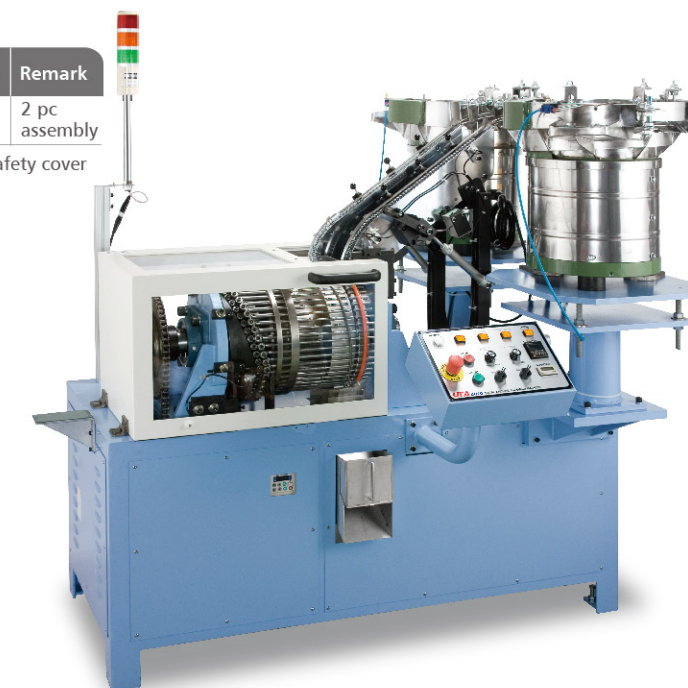
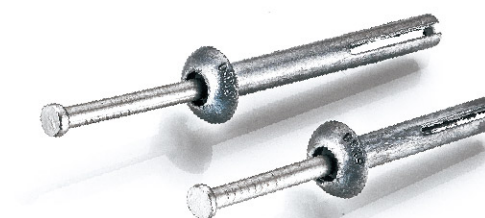
Hammer Drive Anchor Automatic Assembly Machine 金屬壁虎釘自動組合專用機

Specification 規格表 OEM / ODM available **CE**

Model	Anchor (OD) mm (inch)	Anchor (L) mm (inch)	Nail (OD) mm (inch)	Nail (L) mm (inch)	Speed (PPM)	Remark
LZ07-50	6.0 (0.236)	25 ~ 50 (0.984 ~ 1.969)	3.7 (0.146)	34 ~ 58 (1.339 ~ 2.283)	200	2 pc assembly

Assembly machine size (L x W x H): 2,000 x 1,300 x 1,850 mm, N.W.: 1,143 KG, with safety cover

UTA reserves the right to discontinue or modify the above information without notice.
有違保留未經通知變更上述資料的權利。



Cable Clip Automatic Assembly Machine 電線固定夾自動組合專用機

Specification 規格表 OEM / ODM available

Model	Clip Height mm (inch)	Nail Length mm (inch)	Speed (PPM)	Remark
SB03-13	< 13 < (0.512)	L < 44 < (1.732)	50-70	dual nails, nail distance < 22 (0.866)
SB04-09	6 ~ 9 (0.236) ~ (0.354)	11 ~ 15 (0.433) ~ (0.591)	50 ~ 110	single nail
SB04-15	< 15 < (0.591)	< 25 < (0.984)		
SB05-25	16 ~ 25 (0.630) ~ (0.984)	26 ~ 39 (1.024) ~ (1.535)		
SB06-45	26 ~ 45 (1.024) ~ (1.772)	40 ~ 55 (1.575) ~ (2.165)		

Assembly machine size (L x W x H): 2,100 x 1,320 x 1,910 mm, N.W: 830 KG, with safety cover (SB04/SB05/SB06)

UTA reserves the right to discontinue or modify the above information without notice.
有達保留未經通知變更上述資料的權利。



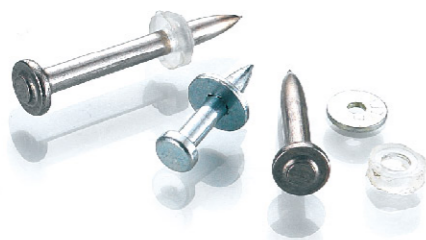
Drive Pin Automatic Assembly Machine 擊釘自動組合專用機

Specification 規格表 OEM / ODM available

Model	Nail (OD) mm (inch)	Nail (L) mm (inch)	Washer (OD) mm (inch)	Washer (T) mm (inch)	Speed (PPM)	Remark
SC01-54	3.7 - 4.0 (0.146) ~ (0.157)	14 ~ 54 (0.551) ~ (2.126)	8.2 - 11.8 (0.323) ~ (0.465)	1.5 (0.059)	120 ~ 200	2 pc assembly

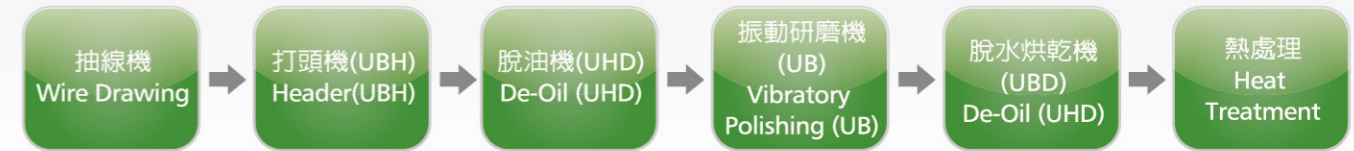
Assembly machine size (L x W x H): 1,850 x 1,900 x 2,400 mm, N.W: 1,790 KG, with safety cover.
Wiring Cabinet size (L x W x H): 600 x 500 x 1,000 mm

UTA reserves the right to discontinue or modify the above information without notice.
有達保留未經通知變更上述資料的權利。

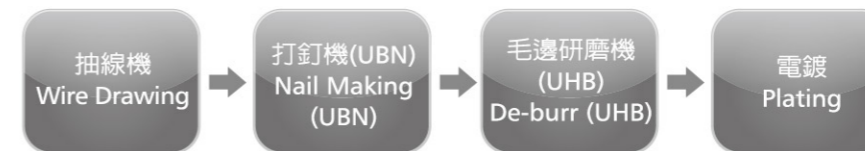


How to make blind rivets. 拉釘生產流程

• Body 帽頭 :



• Stem 釘蕊 :



• Assembly Body & Stem 裝配帽頭與釘蕊 :



How to make self-drilling screws. 自攻螺絲生產流程

• Screw 螺絲 :



• Washer 華司 :



• Assembly screw and washer 裝配螺絲與華司 :



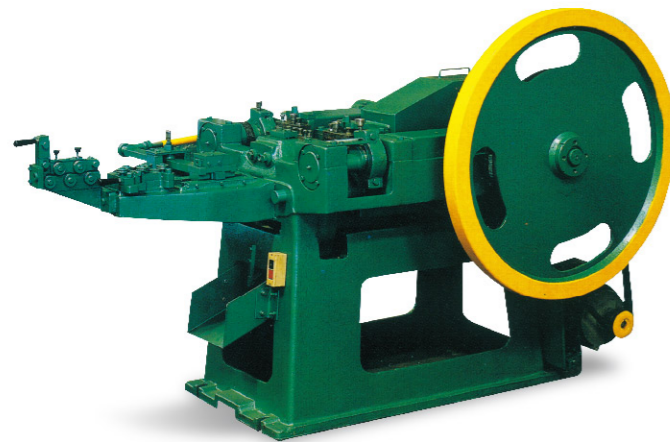
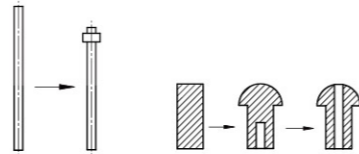
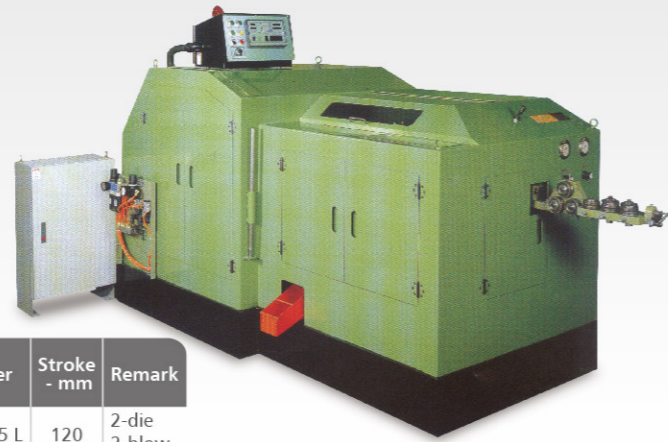
Heading Machine 打頭機

Specification 規格表 OEM / ODM available

Model	Max Capacity - mm	Speed - ppm	Pko - mm	Heading Die Diameter - mm	Punch Dia. - mm	Cut-off Dia. - mm	Cutter	Stroke - mm	Remark
UBH-2015 Screw	6 x 65	100 - 200	15	42 x 38 x 100 L	31 x 95 L	23 x 40 L	11 x 75 L	120	2-die 2-blow
UBH-2015 Blind Rivet	5 x 25	100 - 200	15	42 x 38 x 100 L	31 x 95 L	23 x 40 L	11 x 75 L	120	2-die 2-blow
UBH-2015 Semi Tubular	6 x 50	100 - 200	15	42 x 38 x 100 L	31 x 95 L	23 x 40 L	11 x 75 L	120	2-die 2-blow
UBH-3020 Screw	6.4 x 100	80 - 180	20	48 x 42 x 130 L	38 x 120 L	32	16	200	3-die 3-blow
UBH-3020 Semi Tubular	6.4 x 80	50 - 140	20	48 x 42 x 130 L	38 x 120 L	32	16	200	3-die 3-blow

Machine size (L x W x H): 2,660 x 1,400 x 1,900 mm, N.W: 3,300 KG (UBH-2015)
Machine size (L x W x H): 3,250 x 1,850 x 1,680 mm, N.W: 7,200 KG (UBH-3020)

UTA reserves the right to discontinue or modify the above information without notice.
有違保留未經通知變更上述資料的權利。



Nail Making Machine 製釘機

Specification 規格表 OEM / ODM available

Model	Max OD x L - mm	Production - ppm	Motor - HP	Machine Size	N. W. - kg
UBN-2	2.4 x 45	300 - 350	3	1,750 x 1,200 x 1,170	1,000
UBN-3	3.4 x 75	220 - 280	3	1,900 x 1,250 x 1,250	1,150
UBN-4	4.2 x 100	200 - 250	5	2,300 x 1,500 x 1,350	1,900

UTA reserves the right to discontinue or modify the above information without notice.
有違保留未經通知變更上述資料的權利。



Hardware Painting Machine 小五金噴漆機

Specification 規格表 OEM / ODM available

Model	Volume - l	Paint Type
UBC-1	15	Epoxy

Machine size (L x W x H): 1,300 x 870 x 1,850 mm, N.W: 450 KG

UTA reserves the right to discontinue or modify the above information without notice.
有違保留未經通知變更上述資料的權利。

Vibratory Polishing Machine 三次元振動研磨機

Specification 規格表 OEM / ODM available

Model	Volume - l	Max Load Weight - kg	Bowl Diameter - mm	Motor - HP	Overall Height	N. W. - kg	Remark
UB-250	250	650	1,170	5	1,310	600	

UTA reserves the right to discontinue or modify the above information without notice.
有違保留未經通知變更上述資料的權利。



Dehydration Dryer Machine 脫水烘乾機

Specification 規格表 OEM / ODM available

Model	Loading Volume - l	Bowl ID - mm	Bowl Depth - mm
UBD-5	70	506	352

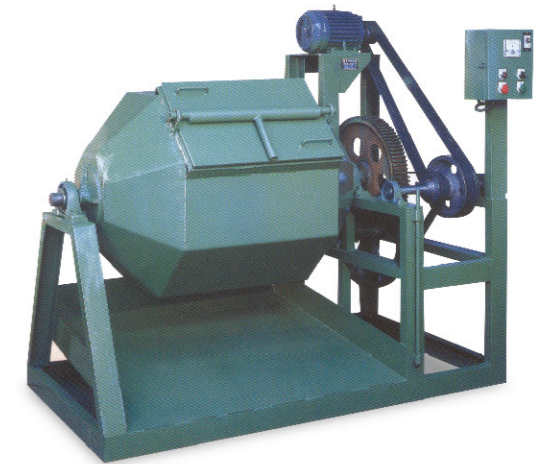
UTA reserves the right to discontinue or modify the above information without notice.
有違保留未經通知變更上述資料的權利。

Hexagon De-burr Machine 六角去毛邊機

Specification 規格表 OEM / ODM available

Model	Loading Volume - l	Machine (LxWxH) - mm
UHB-300	300	1,440 x 680 x 1,400

UTA reserves the right to discontinue or modify the above information without notice.
有違保留未經通知變更上述資料的權利。



Dehydration De-oil Machine 離心式脫油機

Specification 規格表 OEM / ODM available

Model	Loading Volume - l	Machine (LxWxH) - mm
UHD-22	28	1,170 x 1,170 x 620

UTA reserves the right to discontinue or modify the above information without notice.
有違保留未經通知變更上述資料的權利。



Self-Drilling Screw Forming Machine

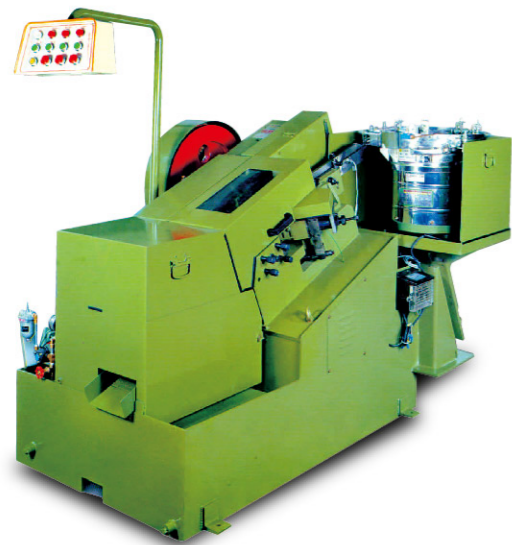
鑽尾螺絲成型機

Specification 規格表 OEM / ODM available

Model	Bland Dia. - mm	Length - mm	Point No.	Production - ppm
USF-100	2.8 - 4.8 (#6 - #10)	9.5 - 100 (3/8" - 4")	1 - 3	120 - 600
USF-200	2.4 - 5.4 (#4 - #14)	9.5 - 200 (3/8" - 7/8")	1 - 6	100 - 600

Machine size (L x W x H): 1,600 x 1,900 x 1,650 mm, N.W: 1,850 KG (USF-100)
Machine size (L x W x H): 1,650 x 2,250 x 1,800 mm, N.W: 2,400 KG (USF-200)

UTA reserves the right to discontinue or modify the above information without notice.
有違保留未經通知變更上述資料的權利。



Self-Drilling Screw Threading Machine

鑽尾螺絲搓牙機

Specification 規格表 OEM / ODM available

Model	Max OD - mm	Max Length - mm	Shank Length - mm	Speed - ppm	Moving Die - mm
UST-75	4 - 8	76	100	120 - 220	108 x 127 x 25

Machine size (L x W x H): 2,700 x 1,400 x 1,700 mm, N.W: 2,300 KG

UTA reserves the right to discontinue or modify the above information without notice.
有違保留未經通知變更上述資料的權利。



Self-Drilling Screw Point Cutting Machine

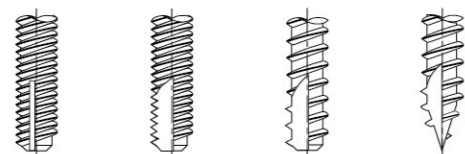
鑽尾螺絲割尾機

Specification 規格表 OEM / ODM available

Model	Dia - mm	Length - mm	Production - ppm
USC-100	2.2 - 8.0	10 - 100	120 - 550

Machine size (L x W x H): 1,700 x 800 x 1,300 mm, N.W: 1,000 KG

UTA reserves the right to discontinue or modify the above information without notice.
有違保留未經通知變更上述資料的權利。



Conveyor Hopper

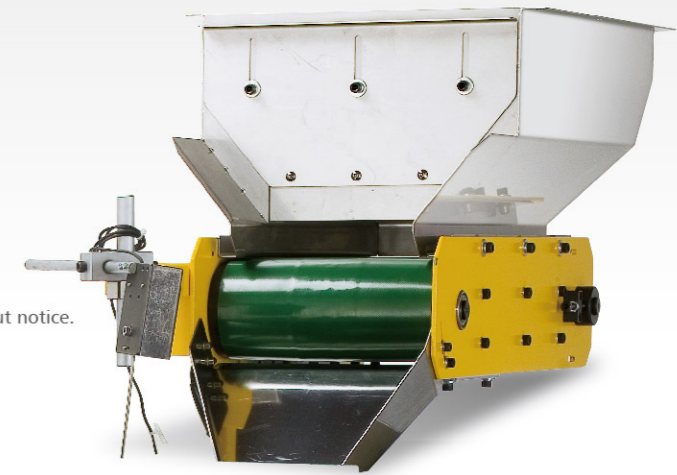
輸送帶型儲料斗

Specification 規格表 OEM / ODM available

Model	Volume cm3	Max Load KG
CA01	23,000	10

Hopper size (L x W x H): 900 x 450 x 700 mm, N.W: 37 KG

UTA reserves the right to discontinue or modify the above information without notice.
有違保留未經通知變更上述資料的權利。



Vibratory Hopper

振動型儲料斗

Specification 規格表 OEM / ODM available

Model	Volume cm3	Max Load KG
CA02	23,000	40

Hopper size (L x W x H): 900 x 450 x 700 mm, N.W: 37 KG

UTA reserves the right to discontinue or modify the above information without notice.
有違保留未經通知變更上述資料的權利。

Vertical Vibratory Hopper

直立式振動儲料斗

Specification 規格表 OEM / ODM available

Model	Hopper Size mm	Max Loading KG
CA03	840 x 800	500

Hopper size (L x W x H): 950 x 1,200 x 2,350 mm, N.W: 200 KG

UTA reserves the right to discontinue or modify the above information without notice.
有違保留未經通知變更上述資料的權利。



Skip Lifter 升降式自動倒料機

Specification 規格表 OEM / ODM available **CE**

Model	Max Load KG
CC02	260

Lifter size (L x W x H): 1,500 x 1,450 x 4,050 mm, N.W: 1,500 KG

UTA reserves the right to discontinue or modify the above information without notice.
有違保留未經通知變更上述資料的權利。



Chain Lifter 鏈條式倒料機

Specification 規格表 OEM / ODM available **CE**

Model	Max Load KG
CC03	585

Lifter size (L x W x H): 950 x 1,200 x 2,350 mm (without hopper)

UTA reserves the right to discontinue or modify the above information without notice.
有違保留未經通知變更上述資料的權利。



Hopper and Chain Conveyor 振動諸料與鏈板式送料機

Specification 規格表 OEM / ODM available **CE**

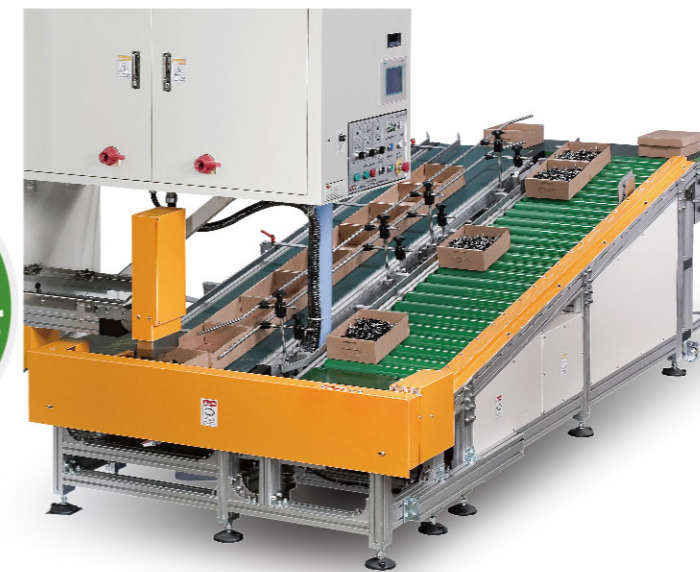
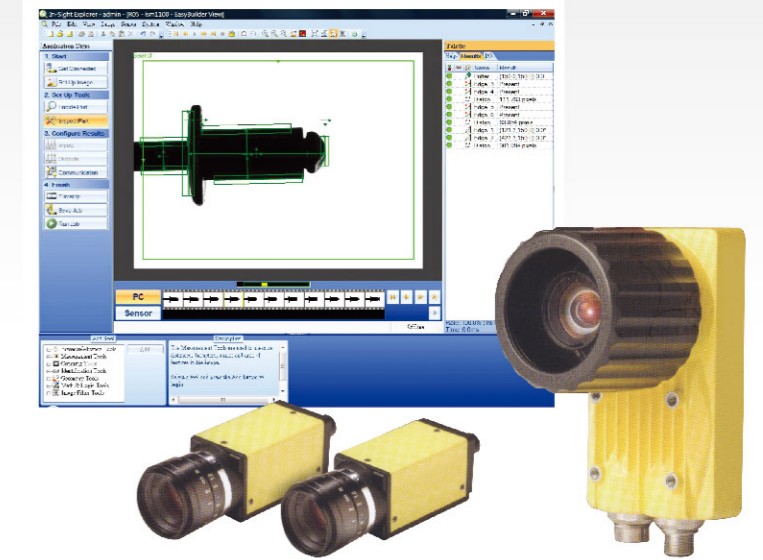
Hopper size (L x W x H): 970 x 1,040 x 860 mm, N.W: 200 KG
Conveyor size (L x W x H): 2,965 x 538 x 2,830 mm, N.W: 650 KG

UTA reserves the right to discontinue or modify the above information without notice.
有違保留未經通知變更上述資料的權利。



Optical Vision System 光學視覺系統

Model and quantity will be various by inspection criterial.
機型和數量會因檢驗項目與標準有所不同。



Box Conveyor CF03 盒子輸送機

Specification 規格表 OEM / ODM available **CE**

Conveyor size (L x W x H): 3,000 x 400 x 900 mm. N.W.:1,500 KG

Roller transportation, applied for larger box. Total weight prior to seals is above 50kg. Connect to UTA assembly machine for quantity package. Minimize the labor and time.
利用滾輪傳動，承載材積較大的盒子，待密封完成大於50KG以上適用降低人工等候，自動運送作業，降低人力搬運

UTA reserves the right to discontinue or modify the above information without notice.
有違保留未經通知變更上述資料的權利。

Box Conveyor CF05 盒子輸送機

Specification 規格表 OEM / ODM available **CE**

Conveyor size (L x W x H): 1,200 x 1,300 x 533 mm, N.W.:150 KG

Conveyor transportation, applied for small quantity package. Total weight prior to sealed is less than 50kg. Connect to UTA assembly machine for quantity package. Minimize the labor and time.
利用橡膠皮帶傳動，適合小包裝，待密封總重量小於50KG以下搭配UTA組裝機，連續技術包裝，減少人力計數包裝時間。

UTA reserves the right to discontinue or modify the above information without notice.
有違保留未經通知變更上述資料的權利。

