

## 測試報告

號碼(No.) : CE/2017/82616

日期(Date) : 2017/08/18

頁數(Page): 1 of 5

## Test Report

有達工業股份有限公司

UTA AUTO INDUSTRIAL CO., LTD.

臺中市大里區工業十二路1號 (大里工業區)

NO. 1, GONGYE 12TH RD., DALI DIST., TAICHUNG CITY 412, TAIWAN (R. O. C.)



以下測試樣品係由申請廠商所提供及確認 (The following sample(s) was/were submitted and identified by/on behalf of the applicant as):

送樣廠商(Sample Submitted By) : 有達工業股份有限公司 (UTA AUTO INDUSTRIAL CO., LTD.)

樣品名稱(Sample Description) : (霧錫)中接銅管 - Butt Splices / 窗型中接管 - Multilink Butt Splices / 高拉力中接管 - Double Crimp Butt Splices / 內外徑大小徑(窗型)中接管 - Step-Down Butt Splices / 裸銅管 - End Sleeve(FERRULE) / 喇叭管、冷凝管 - Valve Connector / 銅管端子 - Copper Lug / 閉端銅管 - Closed End Splice / 短式銅管 - Parallel / 大電流端子 - Battery Contact / 接線盒 - Push In / 接線夾銅片 - Quick Splice / 保險絲座銅片 - Fuse Holder Contact / 輪銅套 - Copper Tubes / 旋轉端子彈簧 - Spring of Wire Nut / 銅錠 - Lump of Copper / 中接銅管(無電鍍) - Butt Splices

樣品型號(Style/Item No.) : BX-series / WB-series / DB-x series / SD(W)B-series / LN-series , CLR-series / Y(S)(U)-xx series / CLN-series / C-series / P-x series / BC-series / UC-series / 80X-series , 81XN-series / 82XP-series / F-series / spring of E-series / C1100 & C1220 Coupon / BXJ-series

收件日期(Sample Receiving Date) : 2017/08/11

測試期間(Testing Period) : 2017/08/11 TO 2017/08/18

測試需求(Test Requested) : 依據客戶指定, 進行鎘、鉛、汞、六價鉻測試. (As specified by client, to test Cadmium, Lead, Mercury, Cr(VI) contents in the submitted sample(s).)

測試方法(Test Method) : 請參閱下一頁 (Please refer to following pages).

測試結果(Test Results) : 請參閱下一頁 (Please refer to following pages).

  
Troy Chang / Manager - Tech  
Signed for and on behalf of  
SGS TAIWAN LTD.  
Chemical Laboratory - Taipei

# 測試報告

號碼(No.) : CE/2017/82616

日期(Date) : 2017/08/18

頁數(Page): 2 of 5

# Test Report

有達工業股份有限公司

UTA AUTO INDUSTRIAL CO., LTD.

臺中市大里區工業十二路1號 (大里工業區)

NO. 1, GONGYE 12TH RD., DALI DIST., TAICHUNG CITY 412, TAIWAN (R. O. C.)



## 測試結果(Test Results)

測試部位(PART NAME)No. 1 : 整體混測 (MIXED ALL PARTS)

測試項目 (Test Items)	單位 (Unit)	測試方法 (Method)	方法偵測 極限值 (MDL)	結果 (Result)
				No. 1
鎘 / Cadmium (Cd)	mg/kg	參考IEC 62321-5 (2013), 以感應耦合電漿原子發射光譜儀檢測. / With reference to IEC 62321-5 (2013) and performed by ICP-AES.	2	n. d.
鉛 / Lead (Pb)	mg/kg	參考IEC 62321-5 (2013), 以感應耦合電漿原子發射光譜儀檢測. / With reference to IEC 62321-5 (2013) and performed by ICP-AES.	2	36.8
汞 / Mercury (Hg)	mg/kg	參考IEC 62321-4 (2013), 以感應耦合電漿原子發射光譜儀檢測. / With reference to IEC 62321-4 (2013) and performed by ICP-AES.	2	n. d.
六價鉻 / Hexavalent Chromium Cr(VI)(#2)	µg/cm <sup>2</sup>	參考IEC 62321-7-1 (2015), 以UV-VIS檢測. / With reference to IEC 62321-7-1 (2015) and performed by UV-VIS.	0.10	n. d.

This document is issued by the Company subject to its General Conditions of Service printed overleaf, available on request or accessible at <http://www.sgs.com/en/Terms-and-Conditions.aspx> and, for electronic format documents, subject to Terms and Conditions for Electronic Documents at <http://www.sgs.com/en/Terms-and-Conditions/Termse-Documents.aspx>. Attention is drawn to the limitation of liability, indemnification and jurisdiction issues defined therein. Any holder of this document is advised that information contained hereon reflects the Company's findings at the time of its intervention only and within the limits of client's instruction, if any. The Company's sole responsibility is to its Client and this document does not exonerate parties to a transaction from exercising all their rights and obligations under the transaction documents. This document cannot be reproduced, except in full, without prior written approval of the Company. Any unauthorized alteration, forgery or falsification of the content or appearance of this document is unlawful and offenders may be prosecuted to the fullest extent of the law. Unless otherwise stated the results shown in this test report refer only to the sample(s) tested.

## 測試報告

號碼(No.) : CE/2017/82616

日期(Date) : 2017/08/18

頁數(Page): 3 of 5

## Test Report

有達工業股份有限公司

UTA AUTO INDUSTRIAL CO., LTD.

臺中市大里區工業十二路1號 (大里工業區)

NO. 1, GONGYE 12TH RD., DALI DIST., TAICHUNG CITY 412, TAIWAN (R. O. C.)



### 備註(Note) :

1. mg/kg = ppm ; 0.1wt% = 1000ppm
2. n. d. = Not Detected (未檢出)
3. MDL = Method Detection Limit (方法偵測極限值)
4. (#2) =
  - a. 當六價鉻結果大於 $0.13 \mu\text{g}/\text{cm}^2$ ，表示樣品表層含有六價鉻。 / The sample is positive for Cr(VI) if the Cr(VI) concentration is greater than  $0.13 \mu\text{g}/\text{cm}^2$ . The sample coating is considered to contain Cr(VI).
  - b. 當六價鉻結果為n.d. (濃度小於 $0.10 \mu\text{g}/\text{cm}^2$ )，表示表層不含六價鉻。 / The sample is negative for Cr(VI) if Cr(VI) is n.d. (concentration less than  $0.10 \mu\text{g}/\text{cm}^2$ ). The coating is considered a non-Cr(VI) based coating.
  - c. 當六價鉻結果介於  $0.10$  及  $0.13 \mu\text{g}/\text{cm}^2$  時，無法確定塗層是否含有六價鉻。 / The result between  $0.10 \mu\text{g}/\text{cm}^2$  and  $0.13 \mu\text{g}/\text{cm}^2$  is considered to be inconclusive - unavoidable coating variations may influence the determination.
5. 樣品的測試是基於申請人要求混合測試，報告中的混合測試結果不代表其中個別單一材質的含量。  
(The samples was/were analyzed on behalf of the applicant as mixing sample in one testing. The above results was/were only given as the informality value.)

## 測試報告

號碼(No.) : CE/2017/82616

日期(Date) : 2017/08/18

頁數(Page): 4 of 5

## Test Report

有達工業股份有限公司  
UTA AUTO INDUSTRIAL CO., LTD.

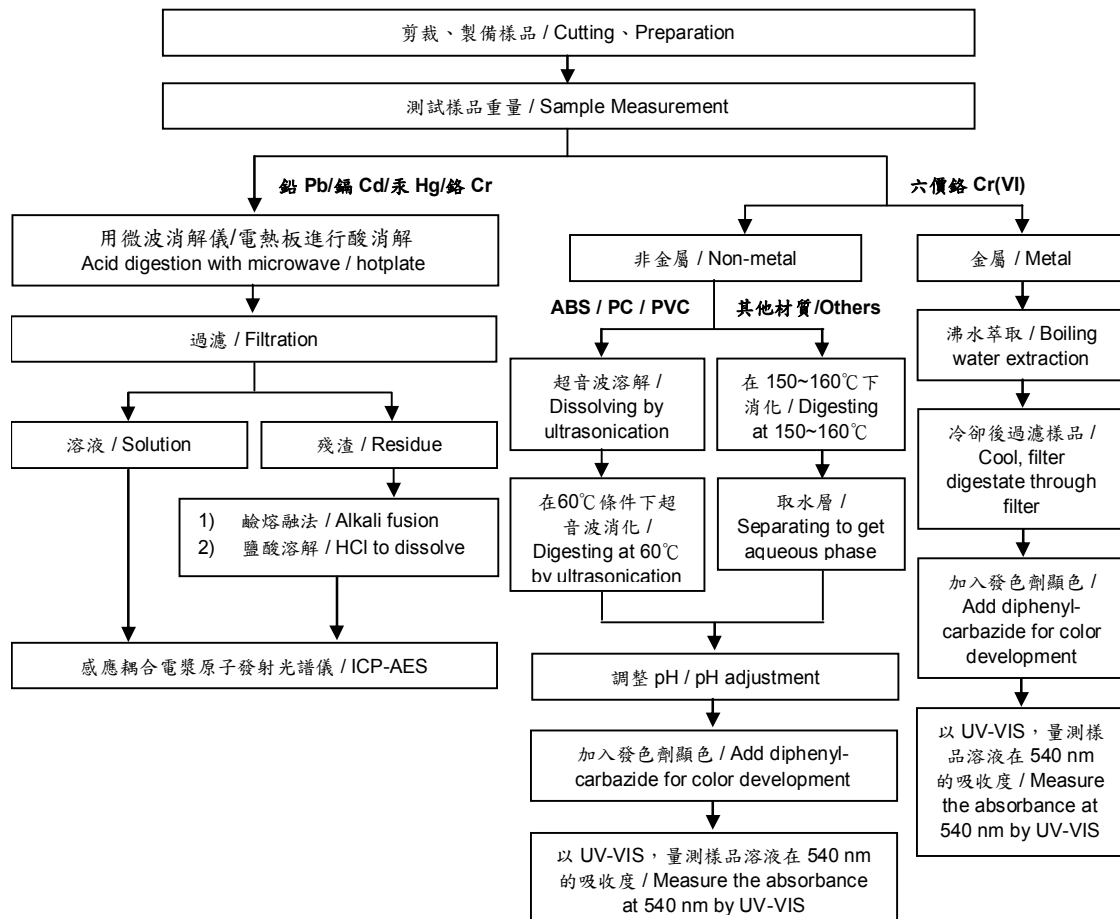
臺中市大里區工業十二路1號 (大里工業區)  
NO. 1, GONGYE 12TH RD., DALI DIST., TAICHUNG CITY 412, TAIWAN (R. O. C.)



### 重金屬流程圖 / Analytical flow chart of Heavy Metal

根據以下的流程圖之條件，樣品已完全溶解。(六價鉻測試方法除外)  
These samples were dissolved totally by pre-conditioning method according to below flow chart. (Cr<sup>6+</sup> test method excluded)

- 測試人員：王志瑋 / Technician : JR Wang
- 測試負責人：張啟興 / Supervisor: Troy Chang



## 測試報告

號碼(No.) : CE/2017/82616

日期(Date) : 2017/08/18

頁數(Page): 5 of 5

## Test Report

有達工業股份有限公司

UTA AUTO INDUSTRIAL CO., LTD.

臺中市大里區工業十二路1號 (大里工業區)

NO. 1, GONGYE 12TH RD., DALI DIST., TAICHUNG CITY 412, TAIWAN (R. O. C.)



\* 照片中如有箭頭標示，則表示為實際檢測之樣品/部位。 \*  
(The tested sample / part is marked by an arrow if it's shown on the photo.)

### CE/2017/82616



\*\* 報告結尾 (End of Report) \*\*